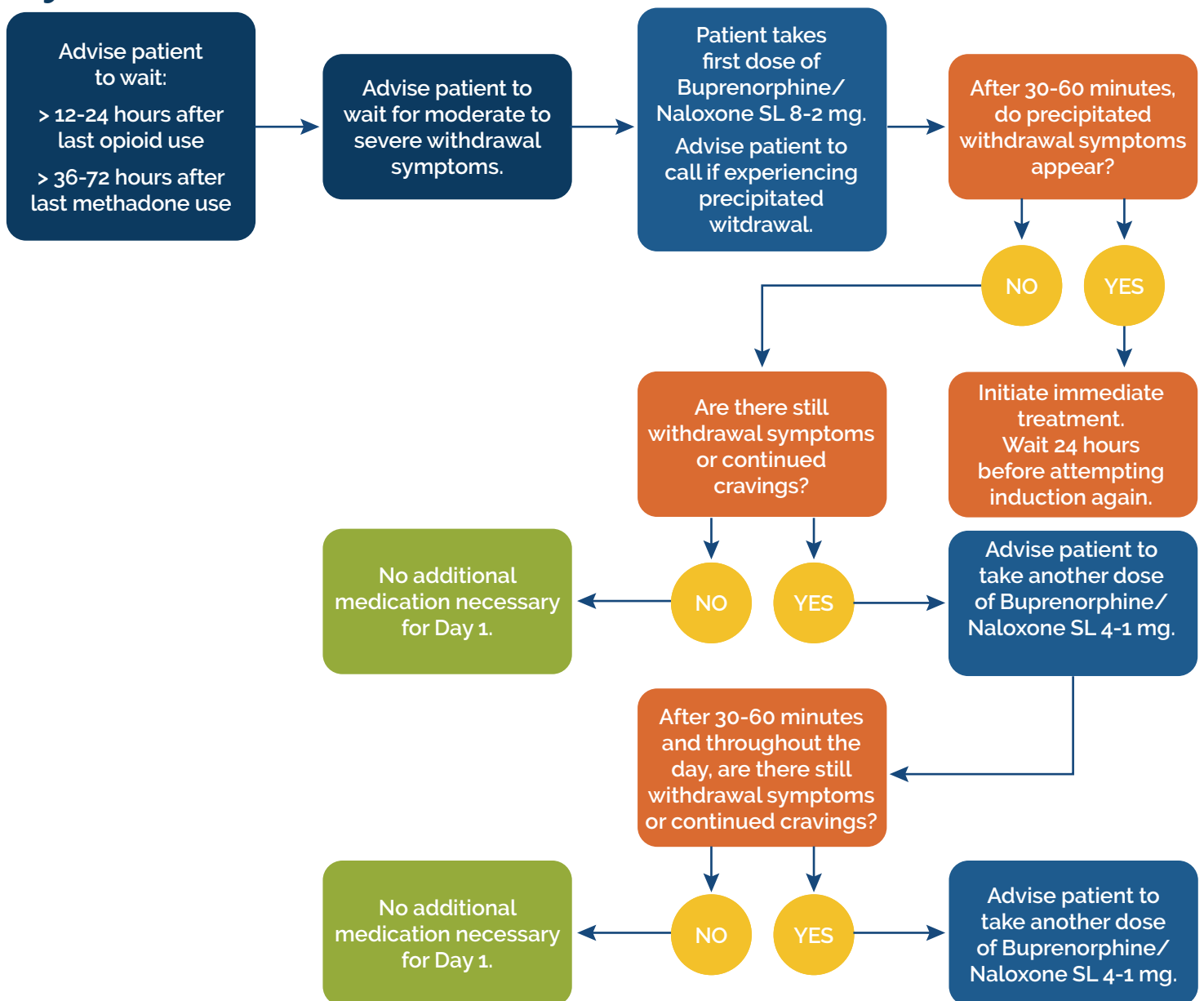


This guide aims to provide prescribers with the essential knowledge and best practices for prescribing buprenorphine effectively and safely. Whether you are new to prescribing buprenorphine or looking to refine your approach, this guide offers practical recommendations to support your practice in combating the opioid epidemic.

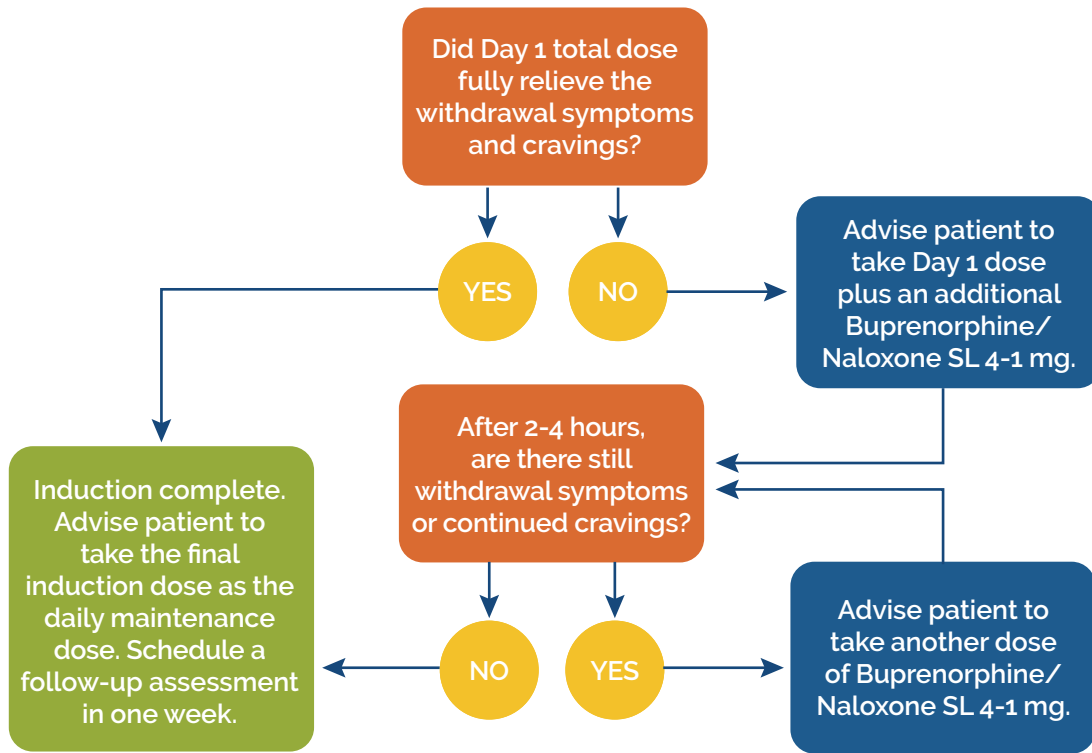
This tool is intended to be utilized when reviewing initial dosing with a patient or when a call is received from a patient that is not yet on a stable dose. It includes the maximum dosage each day to quickly reference when e-prescribing 1, 2, or 3 days worth of buprenorphine/naloxone.

Day 1: Induction



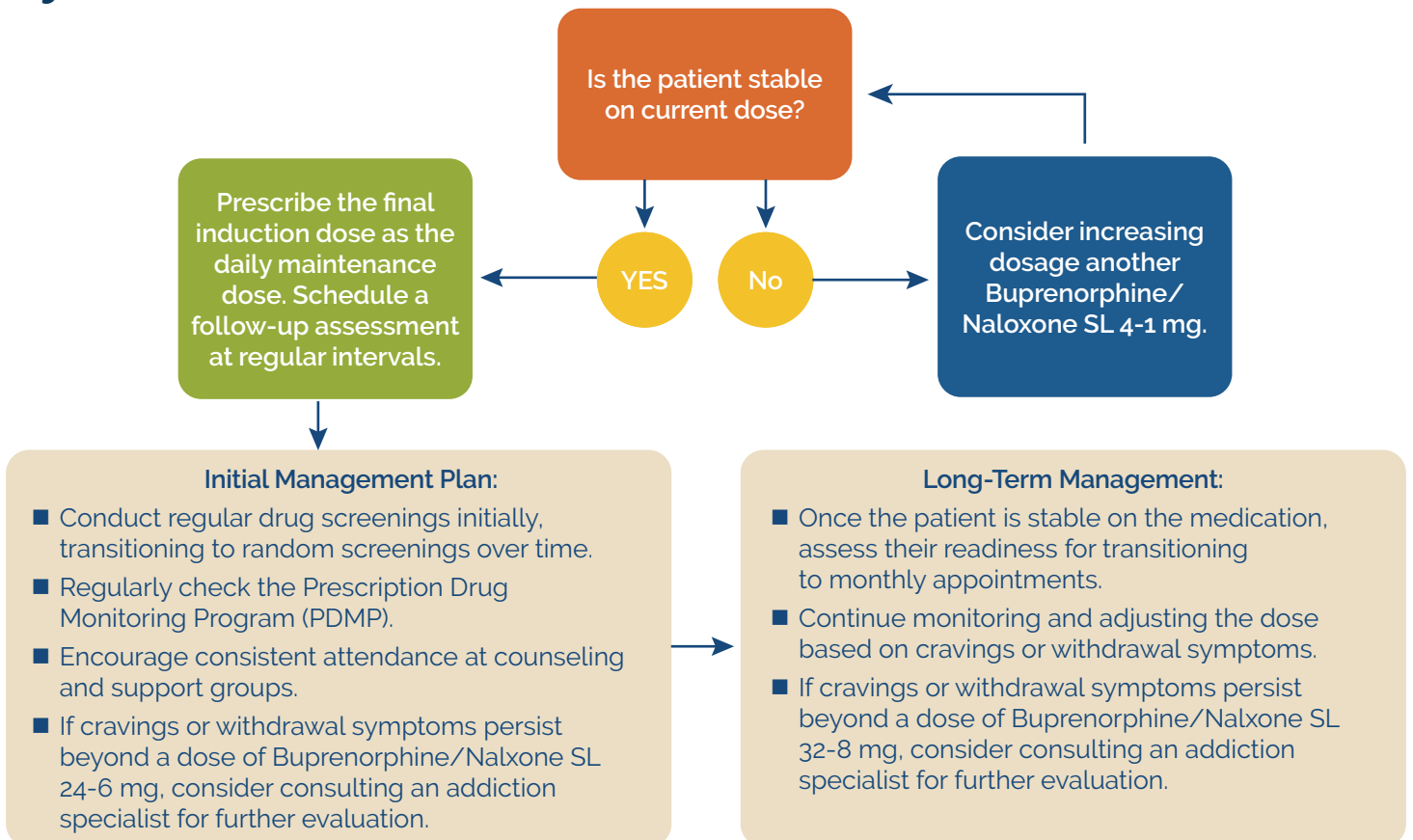
Maximum total daily dose: buprenorphine/naloxone SL 16-4.

Day 2: Induction



Maximum total daily dose: buprenorphine/naloxone SL 20-5.

Day 3+: Maintenance



Maximum total daily dose: Buprenorphine/Naloxone SL 24-6 mg.