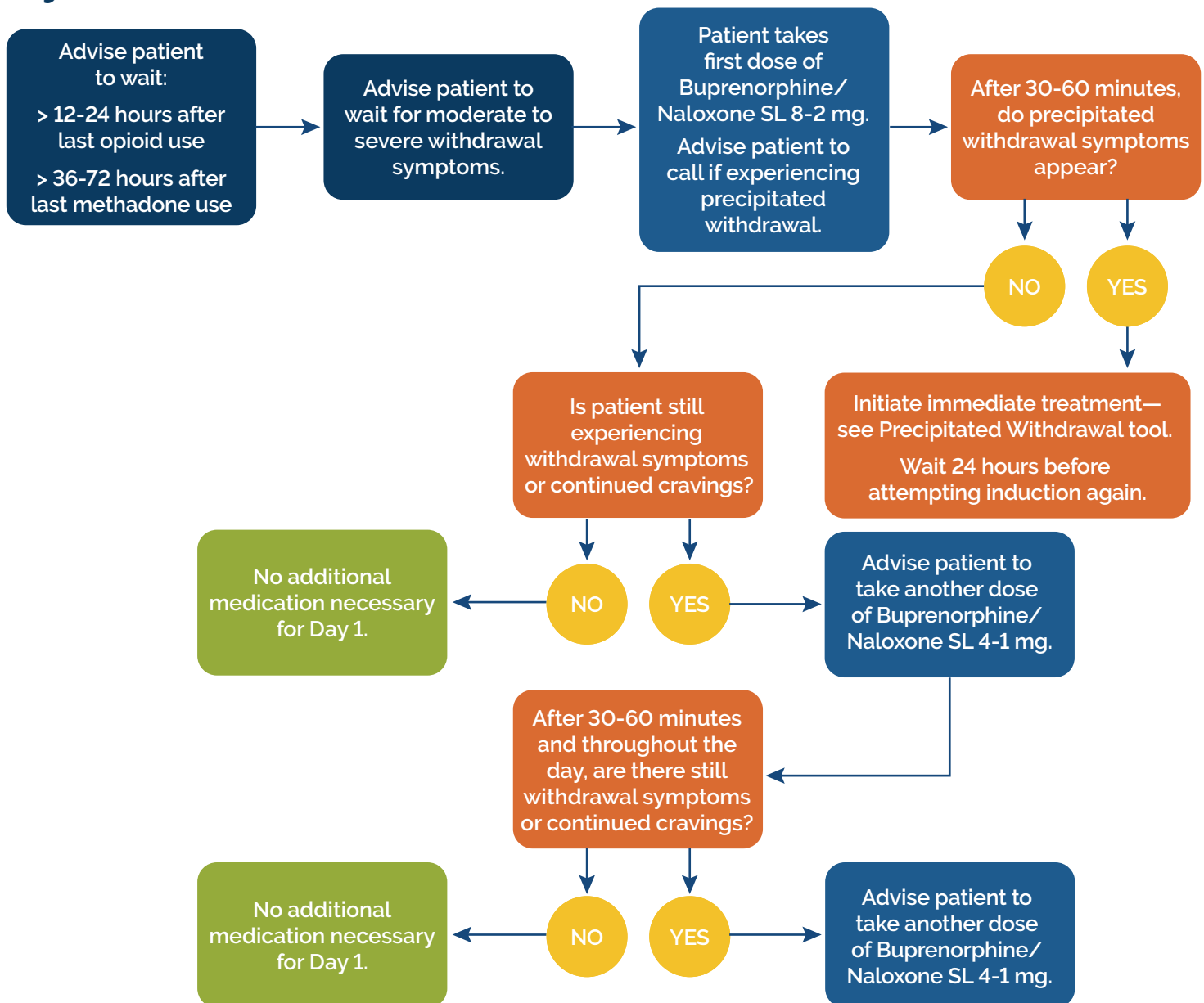


This guide aims to equip prescribers with the essential knowledge and best practices for initiating buprenorphine effectively and safely. Whether you are new to prescribing buprenorphine or looking to refine your approach, this guide offers practical recommendations to support your practice in combating the opioid epidemic.

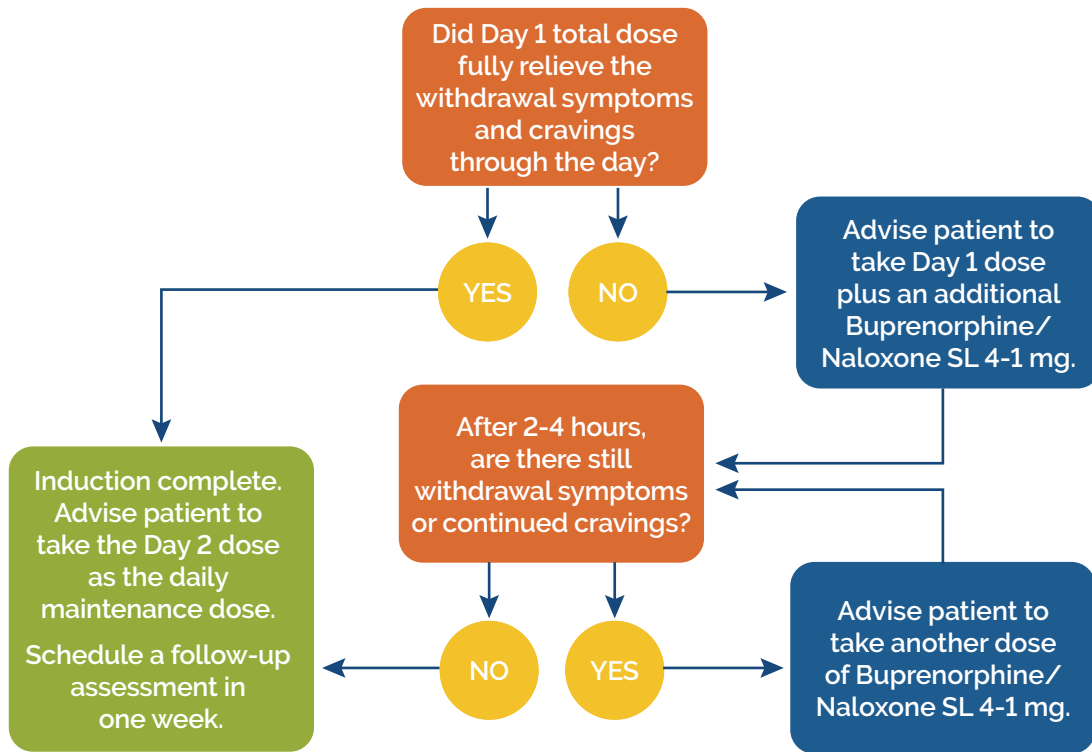
This tool is intended to be utilized when reviewing initial dosing with a patient or when a call is received from a patient that is not yet on a stable dose. It includes the maximum dosage each day to quickly reference when e-prescribing 1, 2, or 3 days worth of buprenorphine/naloxone.

Day 1



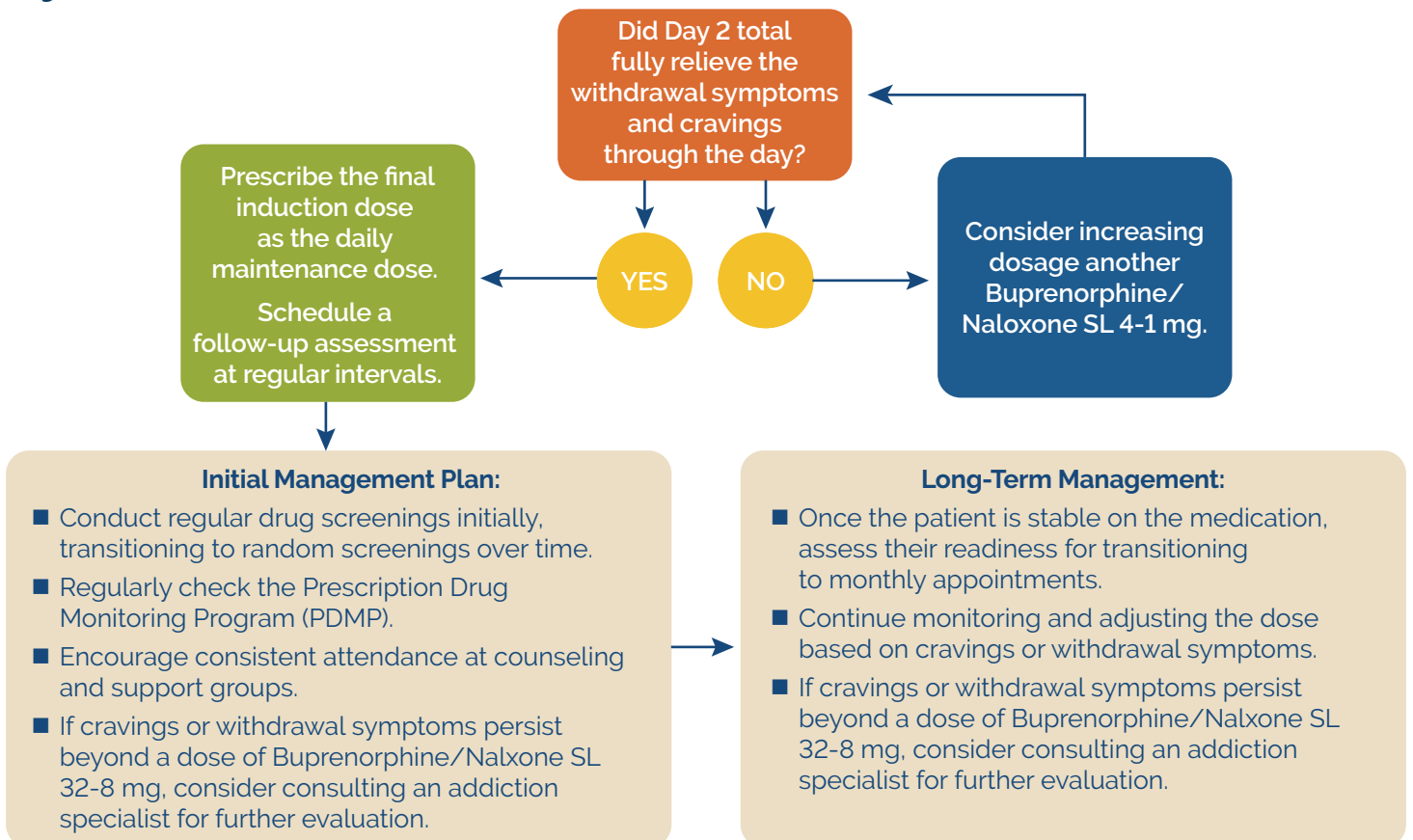
Maximum total daily dose: buprenorphine/naloxone SL 16-4.

Day 2



Maximum total daily dose: buprenorphine/naloxone SL 24-6.

Day 3+



**Maximum total daily dose Day 3: Buprenorphine/Naloxone SL 24-7 mg.
Maximum total daily dose Days 4, 5: Buprenorphine/Naloxone SL 32-8 mg.**